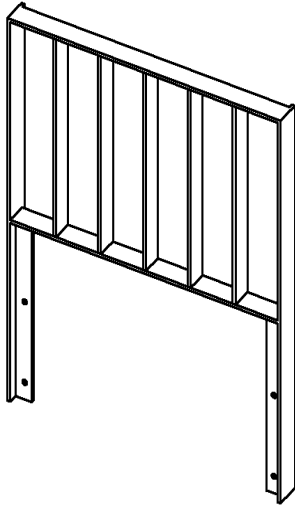
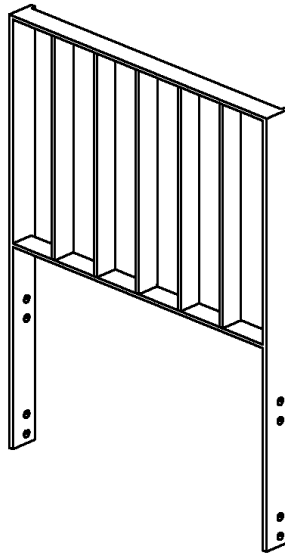


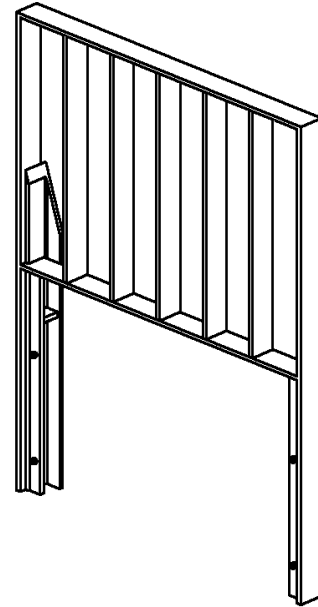
ITA LOAD BACKREST FACT SHEET



Front-Bolt Style



Side-Bolt Style



Slip-On Style

Lift Truck Specs

MAKE OF TRUCK _____

MODEL OF TRUCK _____

CAPACITY _____

CLASS OF CARRIAGE 2 / 3 / 4 / PIN (circle one)

FORK SIZE X X

WIDTH OF CARRIAGE _____

THICKNESS OF CARRIAGE BARS _____

IS CARRIAGE A SIDE SHIFTER? YES / NO (circle one)

IF YES, MODEL SIDE SHIFTER? _____

LBR Specs

HEIGHT OF GUARD REQUIRED (Measured from Ground. 48" is standard)

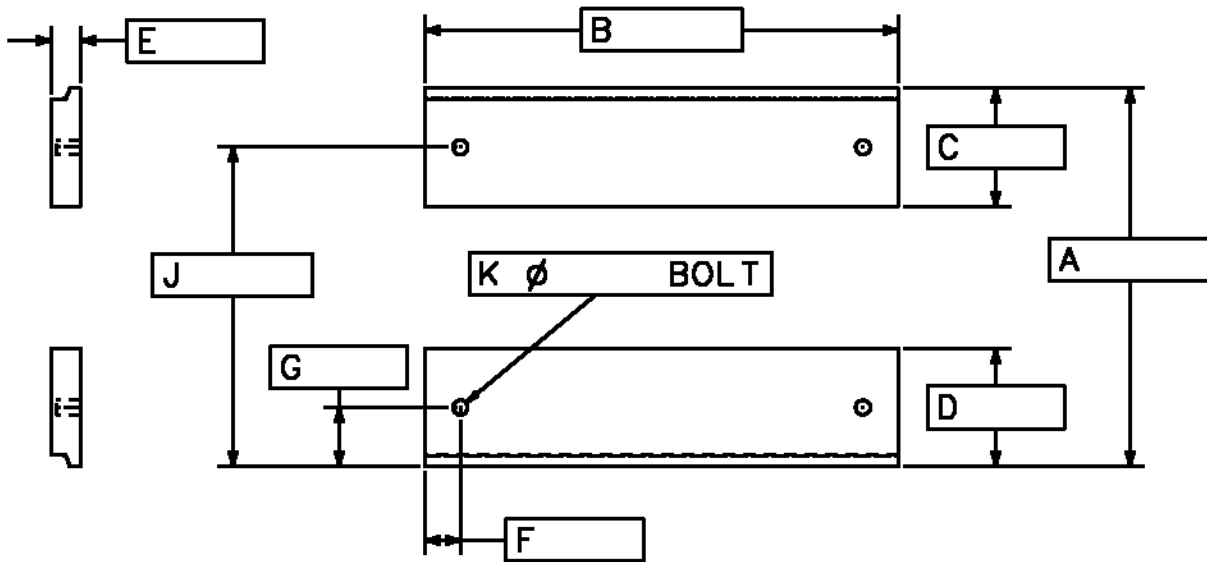
MOUNTING STYLE Front-Bolt / Side-Bolt / Slip-On*

*Not available for all side shifters.

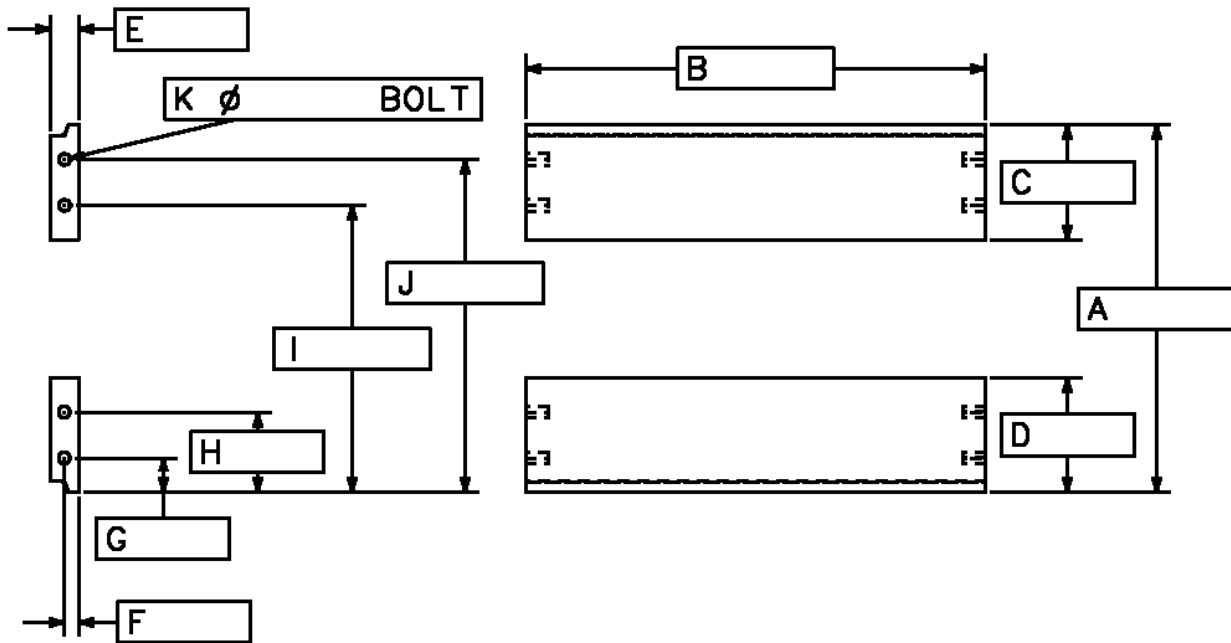
Notes:

LOAD BACK REST WORKSHEET

Front Mounted Style



Side Mounted Style

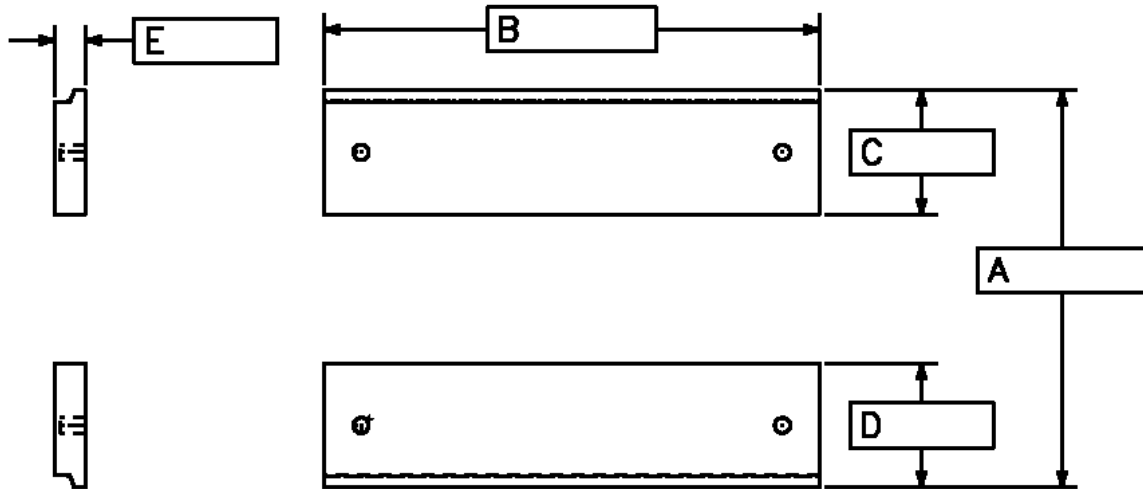


Please fill out the information in the above sketches according to the mounting style desired. If a bolt hole is not found on your particular carriage please put an X through the corresponding measurement. Fill in all information in the following table.

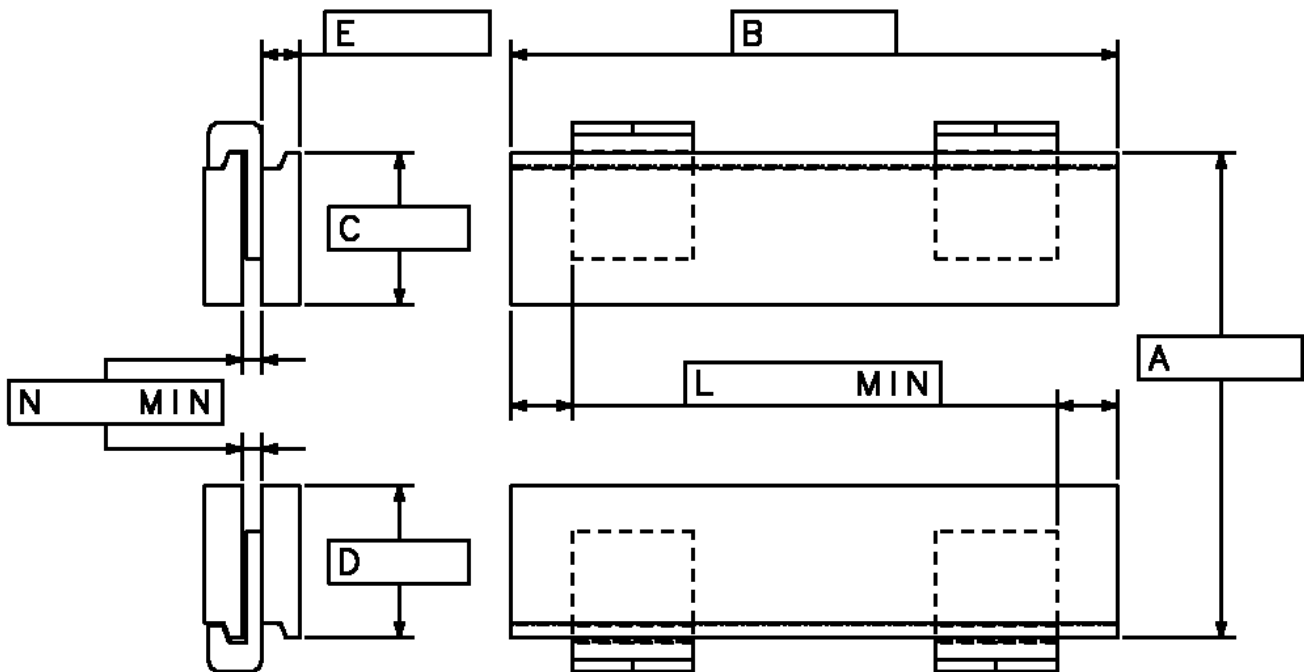
MODEL OF TRUCK	HEIGHT OF GUARD FROM GROUND	FORK SIZE	IS THIS A SIDE SHIFTER
	(48" is standard)	X X	YES / NO (circle one)

LOAD BACK REST WORKSHEET

Slip-On Mounted Style



Slip-On for Side Shifters



Please fill out the information in the above sketches according to the mounting style desired. For Slip-On Side Shifter mounting letter **N** is the distance between the front and rear carriage. Letter **L** is the distance from the end of the carriage till it hits a bracket or other protrusion, whichever distance is smaller. Fill in all information in the following table.

MODEL OF TRUCK	HEIGHT OF GUARD FROM GROUND	FORK SIZE	IS THIS A SIDE SHIFTER
	(48" is standard)	X X	YES / NO (circle one)